



HUNTSVILLE CITY
SCHOOLS
A Legacy of Leading & Learning



2020-2021 Reset Plan

Student Welfare & Social Services

Huntsville City Schools





2020-2021 Reset Plan

Student Welfare & Social Services

Introduction

The Department of Student Welfare and Social Services Department will continue to serve as a liaison between students and their families and local social service agencies. Due to COVID-19, we may adapt some of our services such as home visits to meet health and safety guidelines for all. However, supporting the overall well-being of students and families will remain a top priority.

- Student attendance, regardless of the type of learning environment, is still important. Under the guidelines outlined in the Alabama School Attendance Manual, school social workers and truancy specialists will collaborate with multiple stakeholders (students, parents, district staff, school task force teams, school administration, ALSDE, Health Services, School Counseling, and local juvenile courts) to support student attendance.
- Truancy specialists and social workers will continue to support students and families with Early Warning conferences for students who have 3 or more unexcused absences.
- Social workers will continue to provide wraparound services for students and families and serve as a hub for any parent concerns.
- Social workers and truancy specialists will continue to make home visits and support student and family social-emotional needs while following health and safety guidelines.

Contact



Parents and families with concerns about student's welfare and attendance are encouraged to contact their school administrator and/or the Student Welfare and Social Services Department:

- Dr. Cary Grant,
Director
 - Pamela Palmer,
Administrative Asst.
- at 256-428-6890.



2020-2021 Reset Plan

Student Welfare & Social Services

Framework for 2020-2021

Student Welfare and Social Services	Traditional	Virtual
Student Attendance	Each schools' attendance task force will follow guidelines as outlined in the Alabama School Attendance Manual	Each schools' assigned attendance task force will continue to support attendance in the Virtual learning environment
School Social Workers	Social workers will continue to provide wraparound services to all students and families	Social workers will continue to provide wraparound services to all students and families in the Virtual learning environment
Truancy Specialists and Social Workers	Truancy Specialists and Social Workers will continue to support students and families with Early Warning conferences for students who have 3 or more unexcused absences	Truancy Specialists and Social Workers will continue to support students and families with Early Warning conferences for students who have 3 or more unexcused absences in the Virtual learning environment
Social Worker and Truancy Specialist Home Visits	Social workers and Truancy Specialists will continue to make home visits and support student and family social-emotional needs	Social workers and Truancy Specialists will adapt home visits based on COVID-19 safety guidelines while continuing to support student and family social-emotional needs in the Virtual learning environment



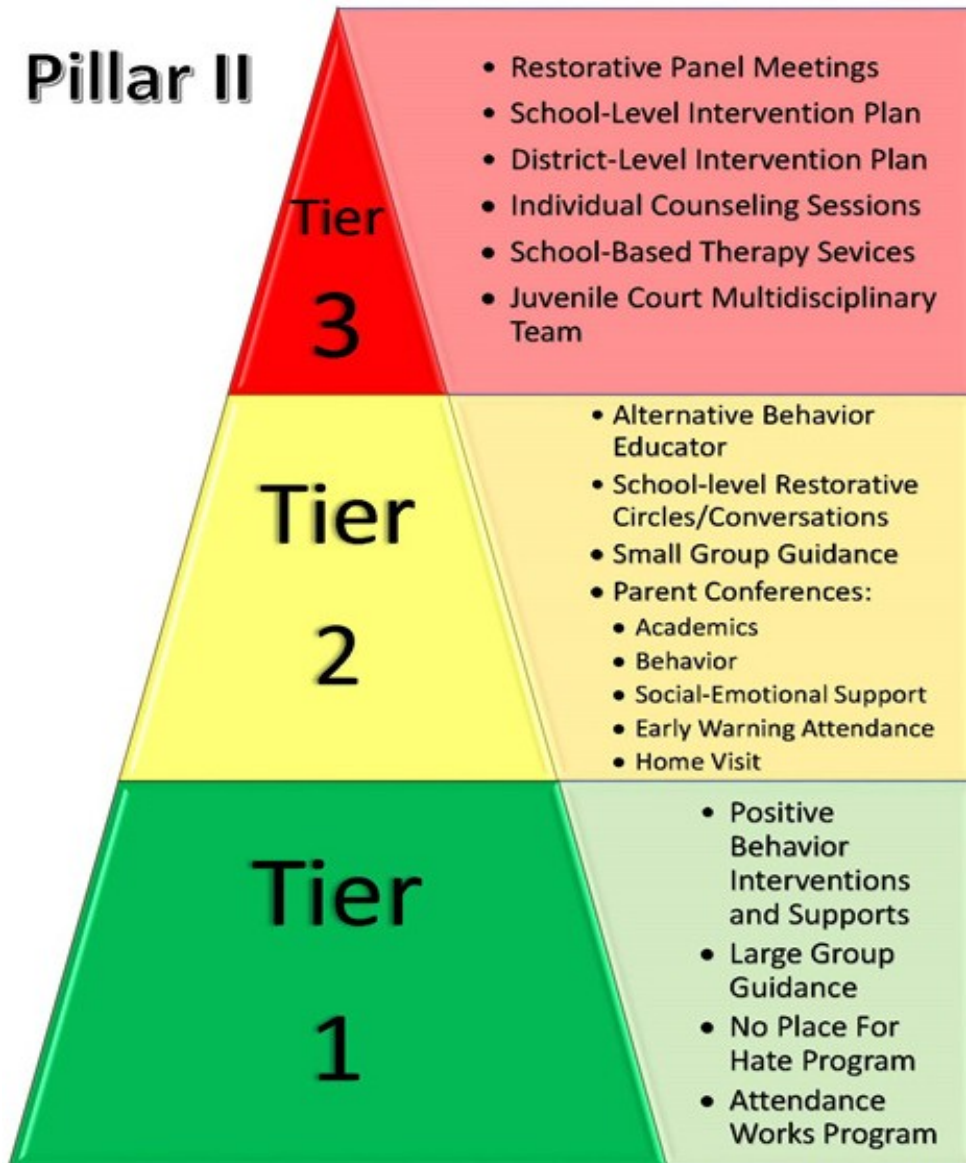


2020-2021 Reset Plan

Student Welfare & Social Services

Tiered Learning Supports

Pillar II



Supports



HUNTSVILLE CITY
SCHOOLS

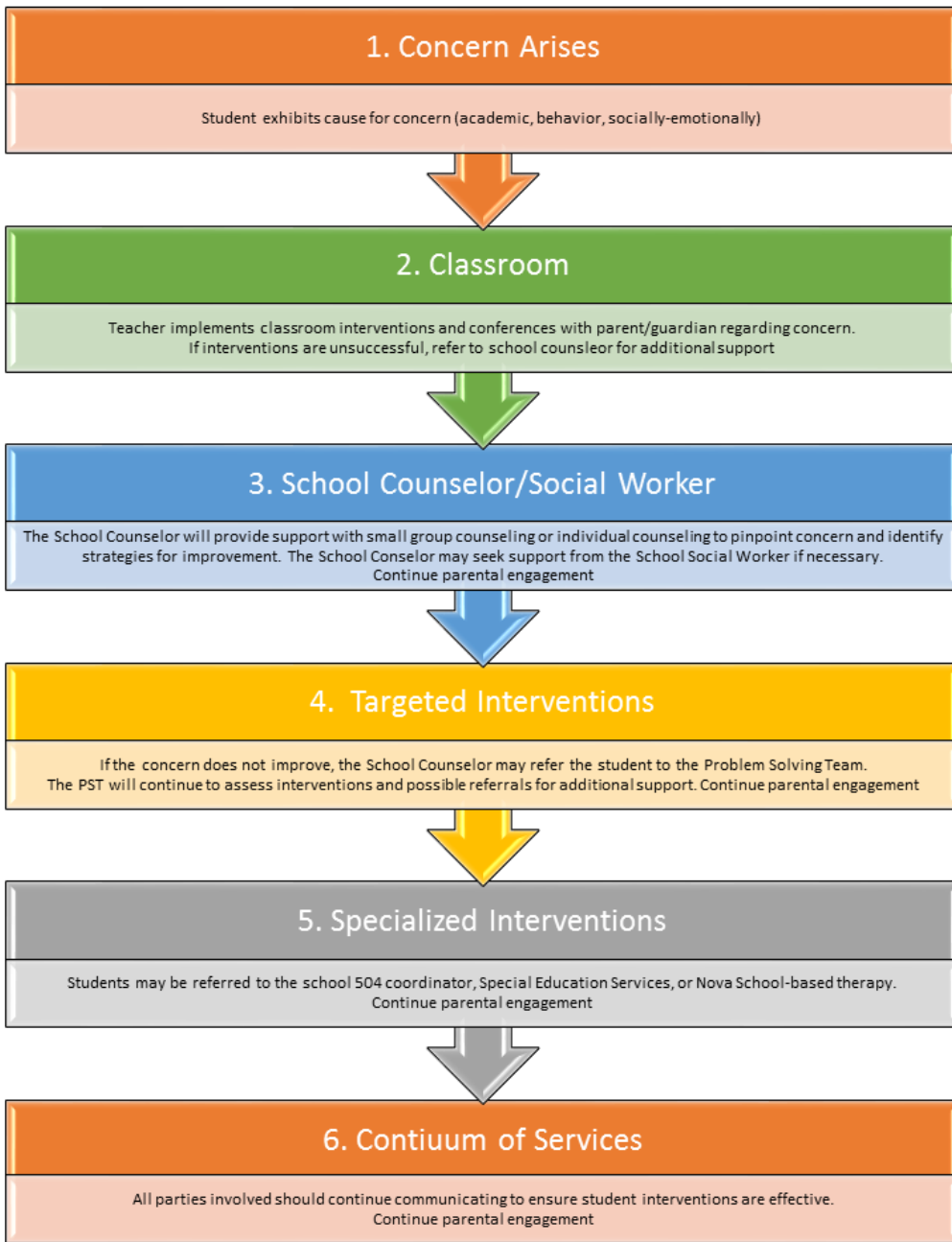
Each student is unique, capable of learning, and deserving of dignity and respect. HCS continually strives to meet the needs of the whole student by incorporating a variety of support systems and resources to foster a positive school climate.



2020-2021 Reset Plan

Student Welfare & Social Services

Student Intervention Process



Intervention



HUNTSVILLE CITY
SCHOOLS

Intervention is a measure or series of measures taken by school staff to address a student's unmet needs. The purpose of these measures is to remedy the cause of student's academic and behavioral issues.



2020-2021 Reset Plan

Student Welfare & Social Services

Resources:

2-1-1 Connect Alabama:

2-1-1 is an easily recognizable number that connects people in need to the appropriate community-based organizations and government agencies. Dialing 2-1-1 connects you to a trained operator 24/7 that has access to a multitude of services in our area. Some of the areas you can receive informational services on include: Mental Health and Health Resources, Basic Human Needs, Children, Youth and Family Services, as well as many other areas. You can also visit their website at www.211connectsalabama.org.

Huntsville City Schools Webpages:

School Counseling - We have a variety of resources on the HCS School Counseling website to help students and families cope amidst COVID-19. For more information, visit the webpage at www.huntsvillecityschools.org/departments/school-counseling.

Student Welfare and Social Services - Our Student Welfare and Social Services department works with students and families in need of services and resources. For a list of community services and community partners, visit the webpage at <https://www.huntsvillecityschools.org/departments/student-welfare-and-social-services>

Additional resources that may be helpful to students and families during this time:

Crisis Services of North Alabama - (256) 716-1000

Responding to individuals and families in crisis

National Children's Advocacy Center - (256) 533-5437

Training, prevention and treatment services to fight child abuse and neglect

The Caring House - (256) 650-1212

Grief support for children

WellStone Behavioral Health - (256) 533-1970

Mental health services for all ages

Resources



HUNTSVILLE CITY
SCHOOLS

Community-based services can assist and support parents and guardians in their role as caregivers. Such services can take many different forms depending on the strengths and needs of the family, but their overarching goal is to help parents enhance skills and resolve problems to promote optimal child development.



HUNTSVILLE CITY
SCHOOLS